

SeaKing Hammerhead

High Resolution Survey Sonar

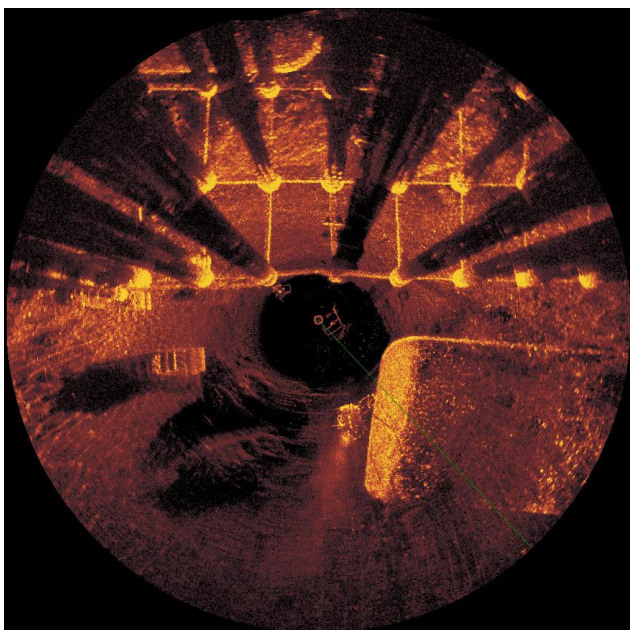


The latest addition to the SeaKing family of imaging scanning sonars, the Hammerhead can easily be networked with other SeaKing equipment.

Combining a resolution twice that of other mechanical sonars, and an ultra-narrow horizontal beam angle, the dual frequency

SeaKing Hammerhead is a truly versatile survey sonar. To complete the package a fully integrated attitude sensor and compass are included to enable accurate logging of survey data.

The Hammerhead can also be integrated with Trittech sonars from the SeaKing or SeaPrince range.



Pier structure at The Underwater Centre, Fort William, range 30m

Versatile and easy to use high performance survey sonar

The SeaKing Hammerhead Survey Sonar utilises a wide transducer aperture, very fine mechanical step size and proven digital sonar technology to create high resolution imagery. Using the 675kHz frequency it is possible to obtain an overview of the site at up to 100m range and the 935kHz frequency allows a very high resolution scan at a range up to 40m.

Benefits

- Smaller targets easy to identify
- Built in compass for bearing reference
- Attitude sensor for accurate positioning
- Dual seal arrangement for reliability
- Image tiler software for map creation

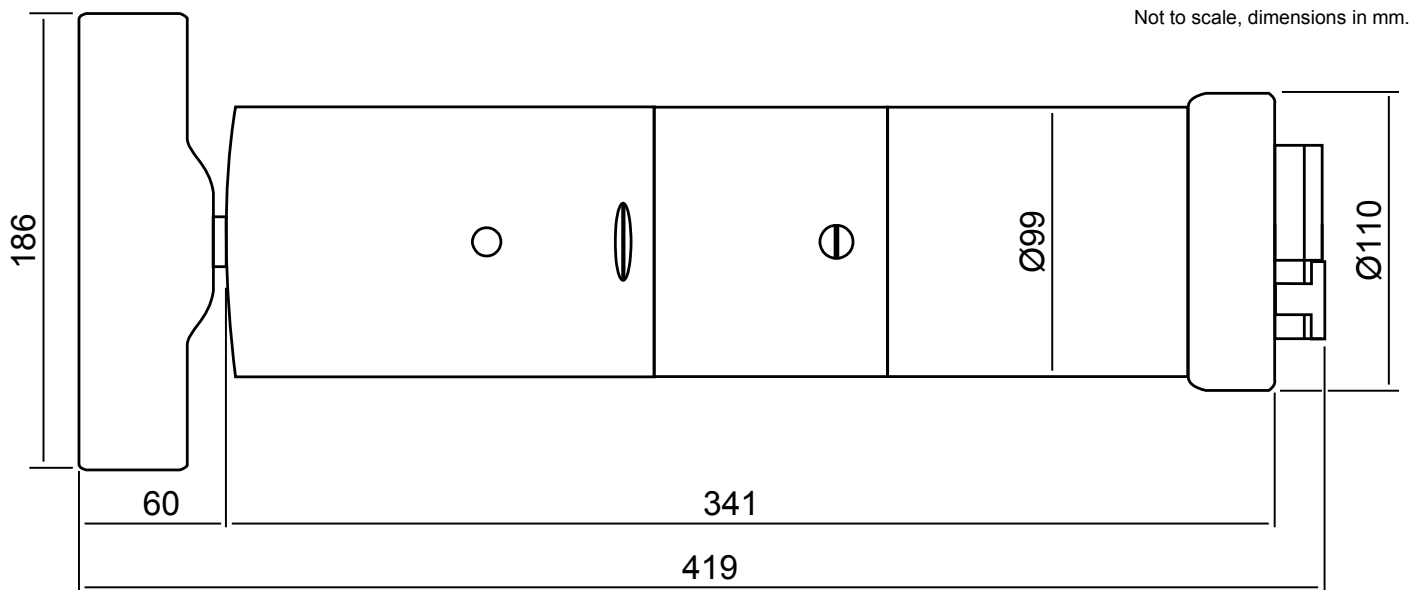
Features

- Twice the resolution of other sonars
- Ultra-narrow beam angles
- 675kHz or 935kHz operation
- Up to 100m range
- 700m depth rating
- Auto-sensing communications

Applications

- Static seabed surveys
- Object location
- Diver monitoring
- Law enforcement and recovery
- Civil engineering inspections
- ROV deployable

Specification



Acoustic	High Frequency	Low Frequency
Operating frequency	935kHz	675kHz
Beamwidth	20° vertical, 0.6° horizontal	30° vertical, 0.9° horizontal
Maximum range	40m	100m
Minimum range	0.4m	
Range resolution	7.5mm (approximately)	

Sonar Display	
Range selections	2m to 100m
Scan resolutions	0.225°, 0.45°, 0.9°, 1.8°
Continuous 360°	Yes
Offset sector scan	Yes
Attitude information	Angle of sonar body to vertical (2 axes)

Physical		Electrical and Communication	
Weight in air	6.8kg	Operating voltage	20 to 72V DC
Weight in water	3.8kg	Power requirement	38W
Materials	Aluminium alloy (hard anodised)	Communication Protocol & Rate	ARCNET: 156kbit·s ⁻¹ (maximum) RS485: 115.2kD (maximum) RS232: 115.2kD (maximum)
Depth rating options	700m 4000m	Connector options	Tritech 6-pin (standard) Others available on request
Temperatures	Operating: -10 to 35°C Storage: -20 to 50°C		

Specifications subject to change according to a policy of continual development.

Document: 0672-SOM-00003, Issue: 04

Marketed by:

Tritech International Ltd
Peregrine Road, Westhill Business Park
Westhill, Aberdeenshire, AB32 6JL
United Kingdom
sales@tritech.co.uk
+44(0)1224 744 111

