

**EXPEDITION
READY**



SeaBat[®] 7160

MULTIBEAM ECHO SOUNDER SYSTEM

The SeaBat 7160 provides an unbeatable combination of range, resolution, portability and powerful features.

The SeaBat 7160 transducer array is comprised of linear receive and transmit arrays mounted together on a support base. The T-shaped array geometry provides the basis for a compact, high-resolution sonar which is easily installed for portable or hull mounts - a first for a high-resolution system in this frequency range. The system features a pitch-stabilized transmitter and an active roll compensated receiver.

Performance enhancements over the SeaBat 8160 include the addition of 512 high density equi-distant beams, variable swath coverage, beam uncertainty measurement, water column data and many other efficiency enhancing features.

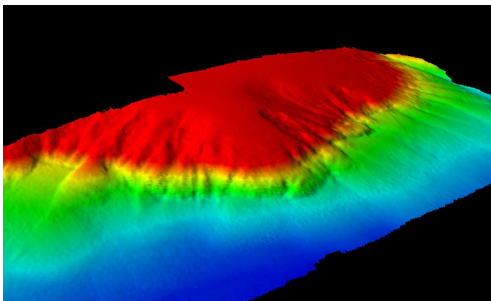


PRODUCT LOGBOOK

FREQUENCY	44kHz (nominal)
SWATH	Swath coverage greater than 4 x water depth
DEPTH	Operational depths 10m to 3000m
BEAMS	512 Equi-Distant 150 Equi-Angle
FLEXIBLE INSTALLATION	Hull-mount or portable
FEATURES	Water column data
	Variable and steerable swath
	Pitch & Roll stabilization
	Tracker Autopilot
	Adaptive & Manual Gates
	Integrated PDS2000 (optional)

SEABAT 7160 SYSTEM SPECIFICATIONS

FREQUENCY	44kHz (nominal)
RANGE RESOLUTION	12cm
SWATH COVERAGE	Greater than 4x water depth
TYPICAL DEPTH	3m to 3000m
MAX DEPTH	3000m
NUMBER OF BEAMS	512 Equi-Distant / 150 Equi-Angle
ALONG-TRACK BEAMWIDTH	1.5°
ACROSS-TRACK BEAMWIDTH	2.0° at nadir (nominal)
PITCH STABILIZATION	±10°
MAX UPDATE RATE	50 Hz
TRANSDUCER DEPTH RATING	60m
SYSTEM SUPPLY	115V/230V 50/60 Hz,500W
SYSTEM CONTROL	Trackball or from Ethernet
DATA OUTPUT	1GB Ethernet
DATA UPLINK	High-speed digital coax
TEMPERATURE: OPERATING, STORAGE	Operating: -5° to +40°C, storage: -30° to +55°C
TRANSDUCER ARRAY DIMENSION	1477mm x 1100mm x 100mm
DIMENSION TRANSCIEVER ARRAY	265mm x 483mm x 469mm
WEIGHT HYDROPHONE	34kg (air) / 14.6kg (water) including 15m cable
WEIGHT TRANSMITTER	42kg (air) / 17.5kg (water) including 15m cable



WHY CHOOSE A SEABAT 7160?

- High-resolution medium depth sonar which is easily installed for portable or hull mounts
- High performance - excellent swath
- High density beams
- Water column data
- Ideal for continental shelf mapping
- Upgrade from SeaBat 8160

For more details visit www.reson.com or contact your local RESON Office. RESON reserves the right to change specifications without notice. 2012©RESON

RESON A/S
Denmark
Tel: +45 4738 0022
reson@reson.com

RESON Inc.
U.S.A.
Tel: +1 805 964-6260
sales@reson.com

RESON OFFSHORE Ltd.
Scotland U.K.
Tel: +44 1224 709 900
sales@reson.co.uk

RESON GmbH
Germany
Tel: +49 (0) 431 720 7180
reson@reson-gmbh.de

RESON B.V.
The Netherlands
Tel: +31 (0) 10 245 1500
info@reson.nl

RESON Pte. Ltd.
Singapore
Tel: +65 6725 9851
singapore@reson.com