

# ARIS EXPLORER 3000

*SEE WHAT OTHERS CAN'T*

## APPLICATIONS:

- ◆ Underwater Inspection
- ◆ Monitor Operations & Divers
- ◆ Construction Monitoring
- ◆ Equipment & Tool Placement
- ◆ Hull & Berth Inspection
- ◆ Environmental Monitoring
- ◆ Port & Harbor Security
- ◆ Target Identification & Classification

## IDENTIFICATION FREQUENCY:

**3.0 MHz**

5m Range

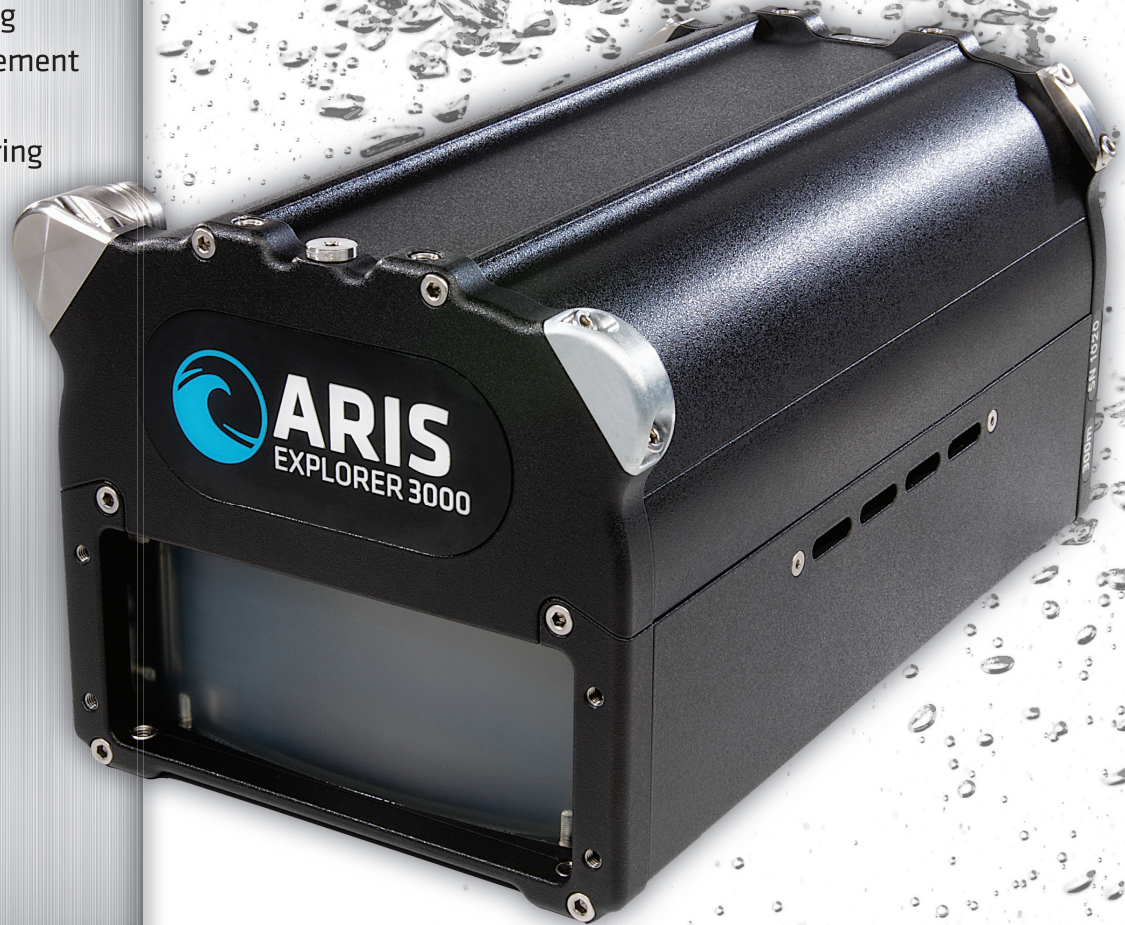
## DETECTION FREQUENCY:

**1.8 MHz**

15m Range

## DEPTH RATING:

**300m**



**DIDSON Technology**

## The Next Generation in Clarity

With 128 distinct physical beams operating at 3MHz, the ARIS Explorer 3000 can provide higher resolution than any other imaging sonar in its class, with unprecedented image clarity even in dark or turbid waters. For longer range applications, Sound Metrics offers the Explorer 1800 and Explorer 1200 models. All models offer dual frequencies, dynamic focusing, multiple recording and output options, background subtraction and innovative software. Teamed with the ARIS Rotator AR<sub>2</sub> on a tripod, pole-mount or ROV, the ARIS Explorer line opens up exciting new possibilities of underwater discovery. For more information, visit [www.soundmetrics.com](http://www.soundmetrics.com).



## FEATURES:

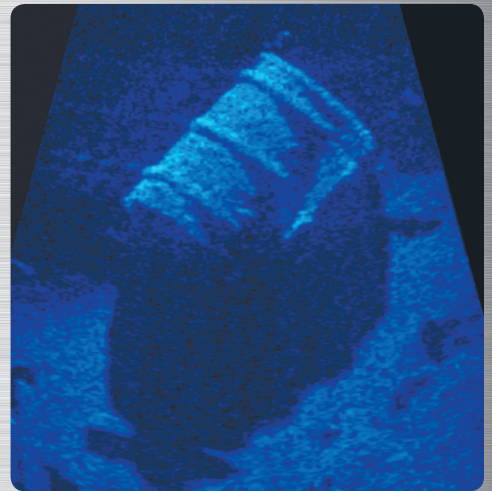
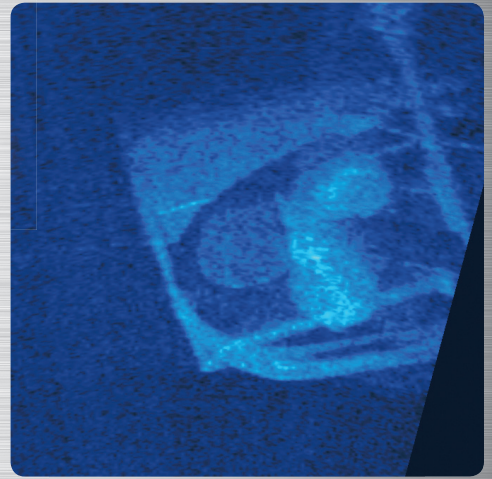
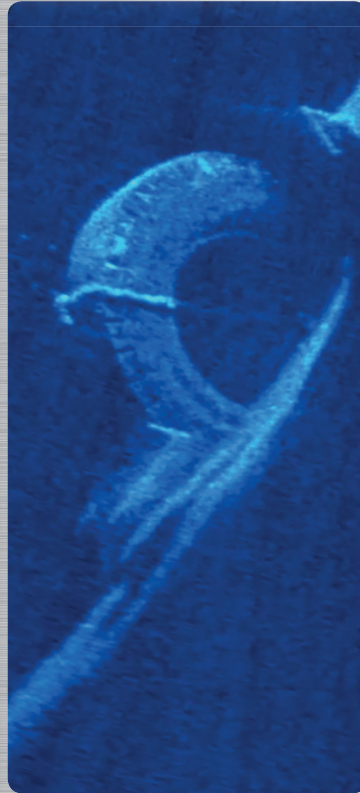
- ◆ Dual Frequency, 3.0 MHz & 1.8 MHz
- ◆ Unprecedented High-Definition Imagery
- ◆ Capable of imaging at close range
- ◆ Dynamic Focus
- ◆ Built in compass & depth gauge
- ◆ Compact & lightweight
- ◆ Low Power Requirement
- ◆ Easy Integration
- ◆ Ethernet Interface
- ◆ Windows™ based Software

Founded in 2002, Sound Metrics Corp. was the first company to introduce a high-frequency imaging sonar to the commercial market. The DIDSON brand of imaging sonars set a new standard for excellence in underwater vision in black and turbid waters. The company recently launched the next generation of DIDSON, with the release of the ARIS brand of high-resolution and high definition imaging sonars. With the ARIS Explorer product range, Sound Metrics once again sets a new standard for imaging at extremely close ranges in all types of water.

Sound Metrics strives to offer the most advanced technology along with the best support and most innovative solutions around your applications

# ARIS

## EXPLORER 3000



## SPECIFICATIONS:

|                            |                     |
|----------------------------|---------------------|
| Number of Transducer Beams | 128                 |
| Beam Width                 | 0.25°               |
| Field-of-view              | 30° x 14°           |
| Frame Rate                 | Up to 15 frames/sec |
| Range Resolution           | Down to 3mm         |
| Power Consumption          | 20 Watts typical    |
| Weight in Air              | 5.17 kg             |
| Weight in Water            | 1.06 kg             |
| Dimensions                 | 26cm x 16cm x 14cm  |
| Cable Length               | Up to 150m          |



[soundmetrics.com](http://soundmetrics.com)  
425-822-3001  
[sales@soundmetrics.com](mailto:sales@soundmetrics.com)