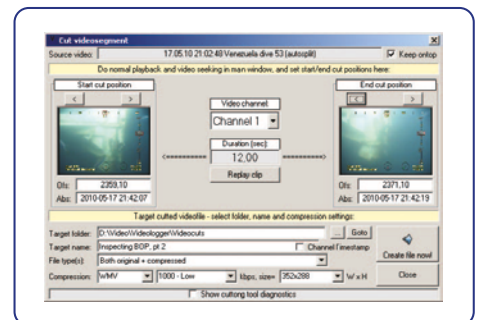


STR SeaDV INSPECTION RECORDER

The **SeaDV Inspection Recorder** is an all in one Digital Video inspection system designed to meet the needs of all offshore inspection and monitoring tasks.



The **SeaDV Inspection Recorder** is a 1-4 channel rack mountable DV inspection recorder built on industrial hardware for maximum robustness. The SeaDV is coupled with Options AS Videologger digital video inspection software and VIGRA video overlay software specifically designed for all visual inspection tasks. VIGRA and Videologger software suites have been

extensively field proven, with more than 850 combined licenses issued to ROV operators and survey companies worldwide.

Cut Videosegment: During recording or playback, the cut-dialog can be shown to cut or copy segments of video to individual files for easy export to e.g. USB memory stick/email.

KEY FEATURES

- 1-4 channel digital video recording (PAL/NTSC)
- High Definition HD-SDI option
- Built in video overlay
- External overlay output option
- Removable hard drive data storage
- Multicolour text and graphics overlay on screen and recorded data files
- Still picture snapshot during recording and playback
- Comprehensive event logging features
- Live preview during recording
- Customisable event hot keys
- Video clips organised via event log
- Easy production of DVD movies based on selection of events and timespan for each event
- Report generation in XLS format

STR SeaDV INSPECTION RECORDER

Options Videologger software supports up to 4 standard or high definition PAL/NTSC video channels and records in Windows Media Video (WMV) format. The system is integrated with overlay graphics and offers a comprehensive range of operator features including still image snapshot capture, event logging with customisable hotkeys, audio commentary, data backup to removable drives and network storage solutions as well as supporting the generation of menu driven DVD's.

Options VIGRA software suite provides enhanced real-time video overlay on 1-4 channels, with fully configurable serial inputs for graphical and text display. A comprehensive range of graphical symbols, animations and custom logos are available to complement standard text overlay. The graphical user interface is intuitive yet boasts powerful control of all features. Fully integrated live video overlay output available for secondary recording and display systems. User programmable inputs allow the integration and display of almost any serial data message.

Options AS are a world leader in Digital Video software solutions to the subsea market. The software development specialists are headquartered in Stavanger, Norway and are the developers of the VIGRA and Videologger software suites used by ROV operators worldwide.

STANDARD DEFINITION HARDWARE SPECIFICATION

Processor:	Intel i7 2600 3.4Ghz Quad-Core
Memory:	4GB DDR3 RAM
Graphics Card:	Dual Head VGA/DVI with 1GB DDR3 RAM for twin VGA/DVI display
Video Capture Card:	4 x composite 75Ω BNC Inputs 4 x S-Video 4 x composite 75Ω BNC Overlay Outputs
Storage:	1TB internal hard drive 2TB removable caddy drive
Interfaces:	8 x DB9 RS232 Serial Ports 2 x Gigabit Ethernet 8 x USB 2.0 1 x DVD+R/RW/DL Audio Input for Microphone Audio Output for Headset
Power:	110/240 VAC, 50Hz (900W)
Dimensions:	19" 3U rack mountable 550mm (L) x 485mm (W) x 132mm (H)
Operating System:	WIN 7 Pro 32bit
Supported Video Standards:	Composite PAL/ NTSC
Supported Resolutions:	720 x 576 (PAL) 720 x 486 (NTSC)

HIGH DEFINITION HARDWARE SPECIFICATION

Processor:	Intel i7 4770 3.4GHz Quad-Core
Memory:	8GB DDR3 RAM
Graphics Card:	Dual Head VGA/DVI with 1GB DDR3 RAM for twin VGA/DVI display
Video Capture Card:	4 x composite 75Ω BNC Inputs 4 x composite 75Ω BNC Overlay Outputs 4 x HD-SDI BNC Inputs 4 x HD-SDI BNC Overlay Outputs
Storage:	1TB internal hard drive 4TB removable hard drive
Interfaces:	8x DB9 RS232 Serial Ports 2 x Gigabit Ethernet 8 x USB 2.0 1 x DVD+R/RW/DL Audio Input for Microphone Audio Output for Headset
Power:	110/240 VAC, 50Hz (900W)
Dimensions:	19" 3U rack mountable 550mm (L) x 485mm (W) x 132mm (H)
Operating System:	WIN 7 Pro 64bit
Supported Video Standards:	Composite PAL/NTSC HD-SDI 720p HD-SDI 1080i HD-SDI 1080p
Supported Resolutions:	720 x 576 (PAL) 720 x 486 (NTSC) 1280 x 720 720p 1920 x 1080 1080 i/p

All information contained in this brochure may be subject to change without prior notice.