

1007 Series Altimeter

P/N 974-70130000

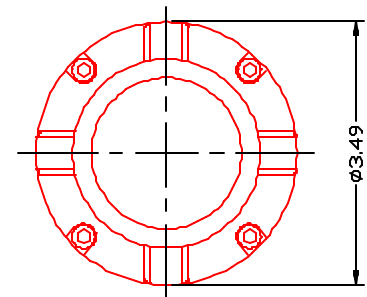
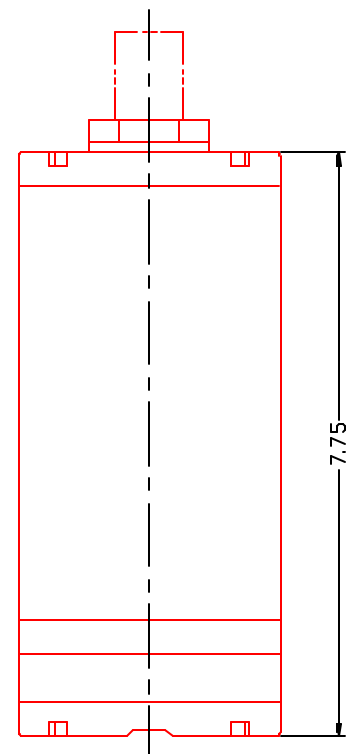


KONGSBERG

The 1007 digital altimeters are small, light weight and designed for deep ocean applications, where dimensions and weight are key equipment selection factors.

The 1007 altimeter is ideally suited to applications such as: positioning, berthing, height above seabed, and below surface monitoring.

Operating Frequency:	200 kHz
Beam Width:	10° nominal
Minimum Range: ²	Adjustable, limited by pulse length
Maximum Range: ²	Adjustable, < 500 M, 300 M usable
Output Resolution: ²	Adjustable, > 2.4mm
Transmit Pulse Widths: ²	Adjustable, 20 to 1000 µS
Repetition Rate:	limited by range and resolution
Assumed speed of sound: ²	Adjustable, 1400 to 1600 M/S
Receive Bandwidth:	20 kHz max
Operating Mode: ¹	Configurable, 807, 809 or MS1000
Serial Interface: ^{2 3 4}	RS232C or RS485
Downlink Baud Rate:	9600 bps
Uplink Baud Rate:	9600 bps, adjustable in MS1000 mode
Hold-off	Via serial command
Synchronization:	
Aux. Analog Output: ¹	Configurable, 0-5V or 0-10V
Power Requirement:	+22 to +26 Vdc @ 1.8A startup, 250 mA continuous
Temperature Range:	-10 to +50°C operating -30 to +50°C storage
Operating Depth:	3000m
Connector:	Seacon XSG-6-BCL
Materials:	Alum 6061-T6, 300 Series S.S., PVC, Epoxy
Finish:	Anodize, Black MIL-A-8625 type II
Dimensions: (3000m)	Length 7.75 "/197mm (excludes connector) Diameter 3.49"/88mm
(Est.) Weight:	Air 5.2 lbs./2.4 kg Water 2.4 lbs/1.1 kg



- ¹ configurable
- ² configurable in 807 mode
- ³ configurable in 809 mode

Specifications subject to change without notice
974-70137901 Iss 1.0

KONGSBERG MESOTECH LTD. 1598 Kebet Way, Port Coquitlam B.C. Canada V3C 5M5
Tel: (604) 464 8144 Fax: (604) 941 5423

- ⁴ auto-detect in MS1000 mode
- * configurable settings require ALTCONFIG software

Specifications subject to change without notice
974-70137901 Iss 1.0

KONGSBERG MESOTECH LTD. 1598 Kebet Way, Port Coquitlam B.C. Canada V3C 5M5
Tel: (604) 464 8144 Fax: (604) 941 5423